



FRONT UPPER CONTROL ARM PATENTED SOLUTIONS

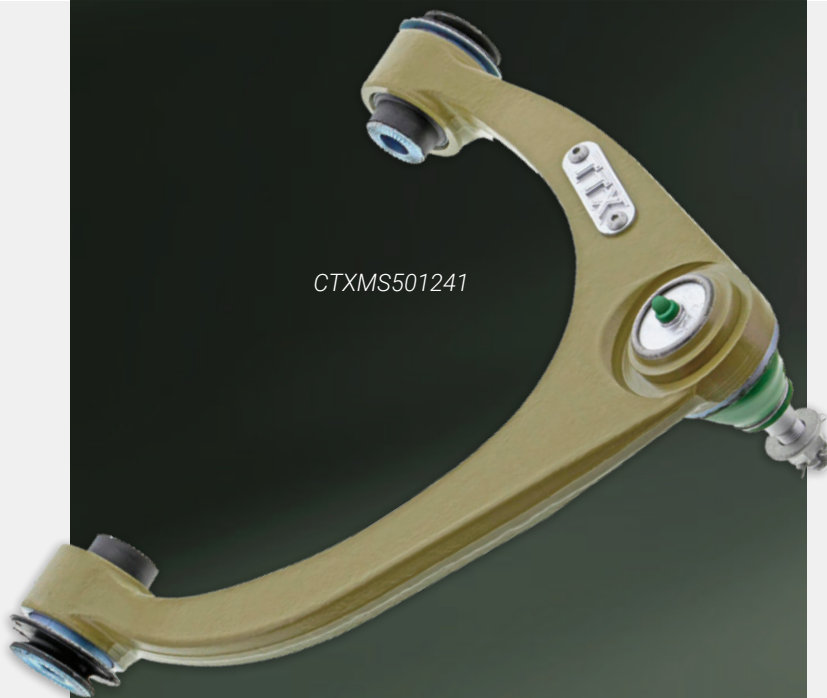


2021-2015
Chevrolet Colorado



2021-2015
GMC Canyon

CTXMS501241



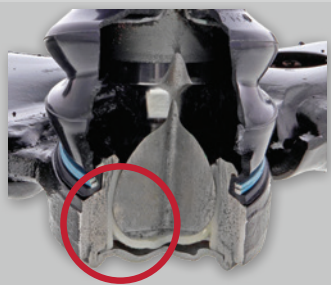
Hardware included for
complete install

**Mevotech's TTX
CTXMS501241/42 are
the patented solution for
extended service life front
upper control arms on GM
mid-sized pickup trucks.**

- Patented greaseable sintered Dynamic Control Bearing™ provides superior performance and improved durability under all conditions
- Patented Locking Dust Boot seals out road contaminants and solid forged steel construction replaces OE-style hollow stamped design for enhanced strength
- Ultimate engineering – TTX delivers the most innovative and long-lasting parts

- The originally equipped front upper control arm is characterized by a stamped steel hollow partial clamshell design.
- This design approach reduces part manufacturing cost and part weight. However, the partial clamshell design incorporates significant hollow areas along key portions of the control arm body.
- The originally equipped and other OE-style aftermarket front upper control arms utilize a non-greaseable plastic bearing.

Originally Equipped Control Arm

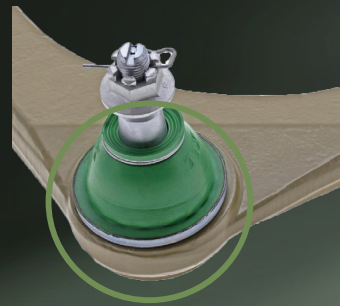


BALL JOINT
Non-greaseable
plastic bearing

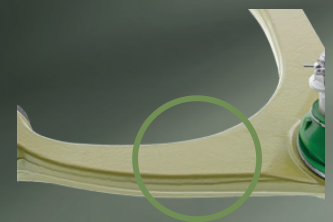


CONTROL ARM BODY
Control arm body
uses partial clamshell
stamped steel design

Mevotech's Patented Solution



**PATENTED DYNAMIC
CONTROL BEARING™**
Optimizes service life by
managing preload. Sintered
bearings retain performance
under high heat and
high load conditions



**ENHANCED
FORGING PROFILE**
Fully forged one-piece
control arm body
enhances assembly
strength

TTX

CONTROL ARMS ALSO FEATURE:

- Patented greaseable sintered bearings
- Patented Locking Dust Boots
- Repel-TEK™ anti-corrosion coating
- Enhanced forged construction
- EASY-SNAP™ cotter pins
- Upgraded bushings



AVAILABLE NOW

Part Number	Position	Application
CTXMS501241	Front Left Upper	2021-2015 Chevrolet Colorado
CTXMS501242	Front Right Upper	2021-2015 GMC Canyon