



# FRONT UPPER CONTROL ARM PATENTED SOLUTIONS



2025-2019 GM SUV



2025-2019 GM 1500 Truck



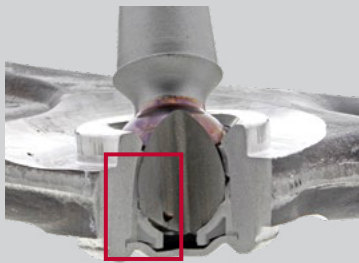
Hardware included  
for complete install

**Mevotech TTX CTXMS501337 and CTXMS501338 are the patented and engineered solution for long service life front upper control arms on the GM 1500 pickups and full size SUVs.**

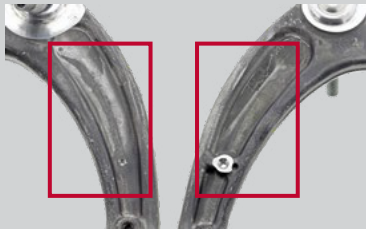
- Patented greaseable sintered Dynamic Control Bearing™ provides superior performance and improved durability under all conditions
- Patented Locking Dust Boot seals out road contaminants and enhanced forging profile increases assembly strength
- Ultimate engineering – TTX delivers the most innovative and long-lasting parts

- Mevotech TTX CTXMS501337 and CTXMS501338 are the patented and engineered solution for extended service life front upper control arms on the GM T1 pickup and SUV platform
- These TTX control arms are constructed with patented upgrades which help improve part service life and are a durable replacement alternative compared to the original equipment- especially for vehicles which are typically used in a working role
- LaborSaver™ additions in the box (such as the included control arm to vehicle frame bolts) help reduce fitting time for the Professional Technician

## Originally Equipped Control Arm



**BALL JOINT**  
Non-greaseable plastic bearing



**CONTROL ARM BODY**  
Recessed forging profile

## Mevotech's Patented Solution

### PATENTED DYNAMIC CONTROL BEARING™

Optimizes longer service life by managing preload. Sintered bearings retain performance under high heat and high load conditions



### PATENTED LOCKING DUST BOOT

Seals out road contaminants and protects internals. Multi-lipped boot is locked to housing for greater protection against the elements as the ball joint articulates through its range of motion



### REINFORCED CONSTRUCTION

Recesses are filled-in to improve assembly strength and reduce stress on the bushings and ball joints as the vehicle travels



### Control Arms also feature:

- Patented greaseable sintered bearings
- Patented locking dust boots
- Repel-TEK™ anti-corrosion coating
- Enhanced forged construction
- EASY-SNAP™ cotter pins and fastening hardware
- Upgraded bushings



| Part Number | Position          | Application  |
|-------------|-------------------|--|
| CTXMS501337 | Front Left Upper  | 2025-2021 Cadillac Escalade<br>2025-2021 Cadillac Escalade ESV<br>2025-2019 Chevrolet Silverado 1500<br>2025-2021 Chevrolet Suburban |
| CTXMS501338 | Front Right Upper | 2025-2021 Chevrolet Tahoe<br>2025-2019 GMC Sierra 1500<br>2025-2021 GMC Yukon<br>2025-2021 GMC Yukon XL                              |

Mevotech LP. | ©2025 No reproduction in whole or in part without prior written approval.