

## MS25574 MS25575 BALL JOINTS PATENTED SOLUTIONS



2022-2020  
Jeep Gladiator JT



2022-2018  
Jeep Wrangler JL/JLU

### SUPREME™

MS25574



MS25575



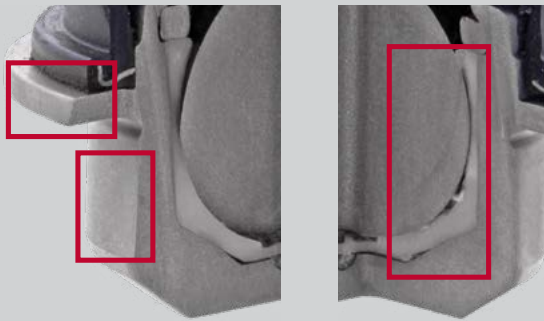
Hardware included  
for complete install

**Mevotech Supreme MS25574 and MS25575 are the patented solution for enhanced service life front upper and lower ball joints on the Jeep Wrangler JL/JLU and Gladiator JT platforms.**

- Self-lubricating greaseable sintered bearings improve durability and performance
- Patented Locking Dust Boot seals out harmful road contaminants (*US Patent N° 9771971*) and upgraded housing forging profile increases part strength
- Superior part life and durability through innovative engineering

- The originally equipped front upper and lower ball joints utilize a non-greaseable plastic bearing and the standard housing design.
- This design approach reduces part manufacturing cost and overall part weight. However, an engineered solution is required for these vehicle applications, which typically encounter high load and high heat service conditions.
- Additionally, vehicle curb weight and torque output ranges considerably depending on trim. The plug-in hybrid package can add up to 722 LBS (328 KG) over a base model. Torque output of the plug-in hybrid is 470 LB-FT (640N-M) compared against 260 LB-FT (354N-M) generated by the 3.6L V6. These factors can be additional stressors on part service life.

**Originally Equipped Ball Joints**



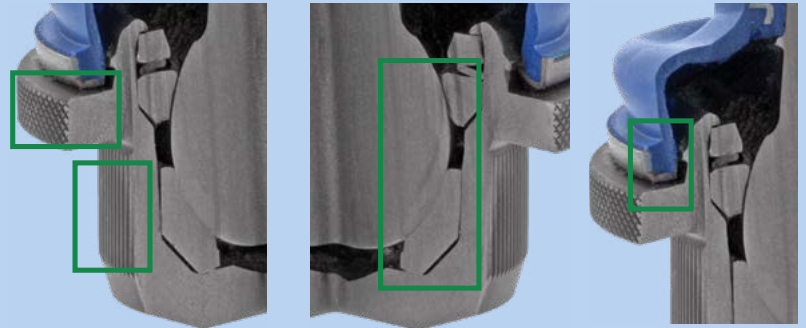
**HOUSING**

*Uncoated and non-knurled with standard profile flange*

**BEARING**

*Non-greaseable plastic bearing*

**Mevotech's Patented Solution**



**REINFORCED DESIGN**

Thicker and wider flange improves assembly strength and provides a larger press-in surface area for the Professional Technician

**ENGINEERED INTERNALS**

Greasable, self-lubricating upper and lower sintered bearings are engineered to excel under high heat and high load conditions

**PATENTED LOCKING DUST BOOT**

Contaminants are locked out with permanent sealing system

**SUPREME™**

**Chassis parts also feature:**

- Greaseable self-lubricating sintered bearings
- Application-specific ball studs with added material
- Thicker forged construction
- Hardware and pre-installed components for quick fitting



Part Number	Position	Application
MS25574	Front Upper	2022-2018 Jeep Wrangler JL/JLU 2022-2020 Jeep Gladiator JT
MS25575	Front Lower	