



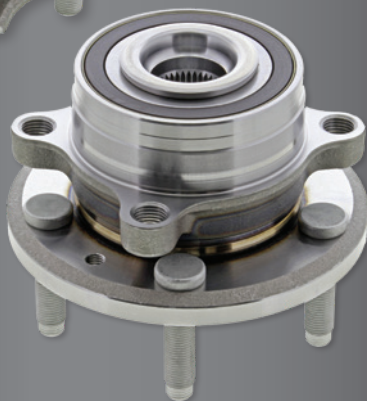
HUB ASSEMBLIES WHEEL END REPAIR



G25301
2020-2009
Dodge Journey



G30303
2014-2007 Nissan Altima



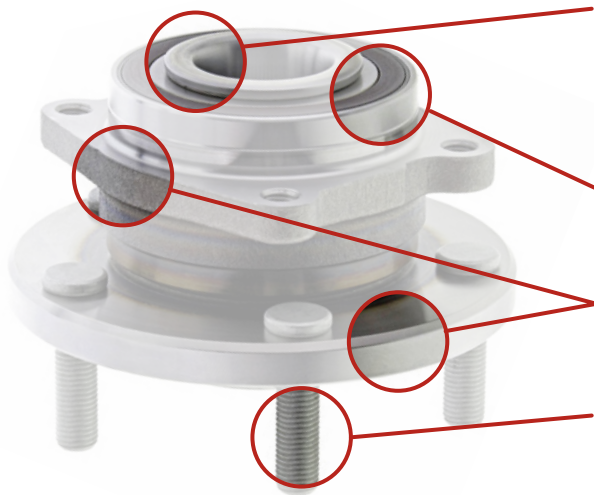
G512460
2019-2011 Ford Explorer

Mevotech Original Grade hub assemblies are the first choice for value-driven wheel end repair solutions.

- Comprehensive coverage for popular domestic and import passenger vehicles, SUVs, mini-vans and trucks
- Manufactured using premium components to restore vehicle ride and comfort
- Reliable performance, exact fit and quality design in every box



HUB ASSEMBLIES



Advanced orbital roll formed manufacturing process* ensures a uniform pre-load with no adjustment required over service life. Increased assembly stiffness reduces potential vibration and improves part life

Seals with integrated ABS encoder* match the original profile for correct wheel speed signal output

Flanges are precision machined and runout tested – meaning no vibration as the assembly rotates

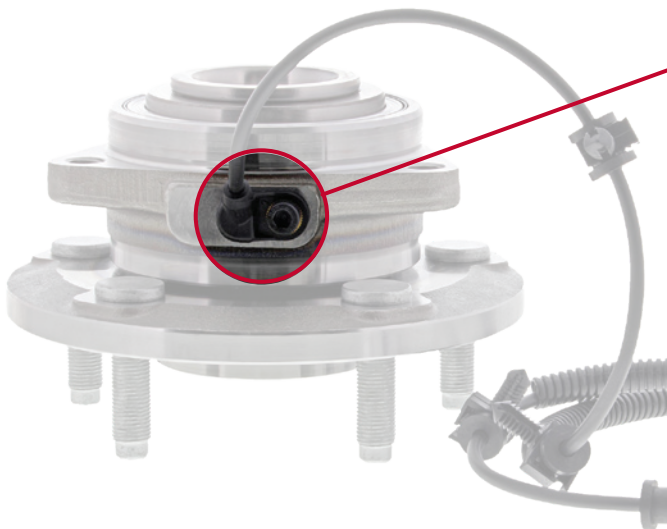
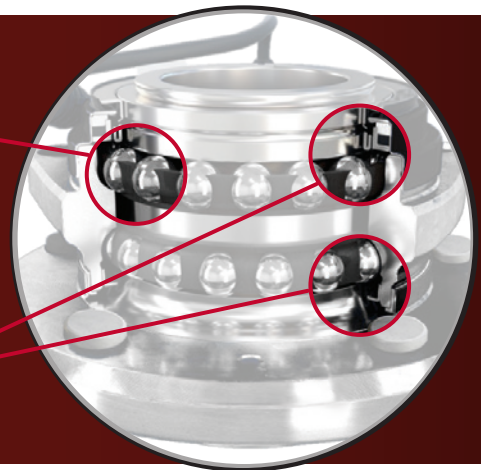
Wheel studs are coated against corrosion – helping prevent seized lug nuts

*application-specific

Reinforced bearing cages are accurately paired to polished raceways- optimizing movement of high-grade rolling elements and reducing rolling resistance

Meeting NLGI No. 2 standards, pre-filled lubricating grease also protects against internal corrosion, has excellent pressure and anti-wear attributes and retains performance in all temperature ranges

Lipped seals work to keep contaminants out. Made from premium material, grease is retained inside and harmful contaminants out.



ABS sensor and internal tone ring are designed and tested to replicate the original for signal type and output – ensuring 100% uptime of vehicle ABS, TCS and stability control systems

Plug ends are specifically molded by application for correct communication with the ABS module and overall secure fit