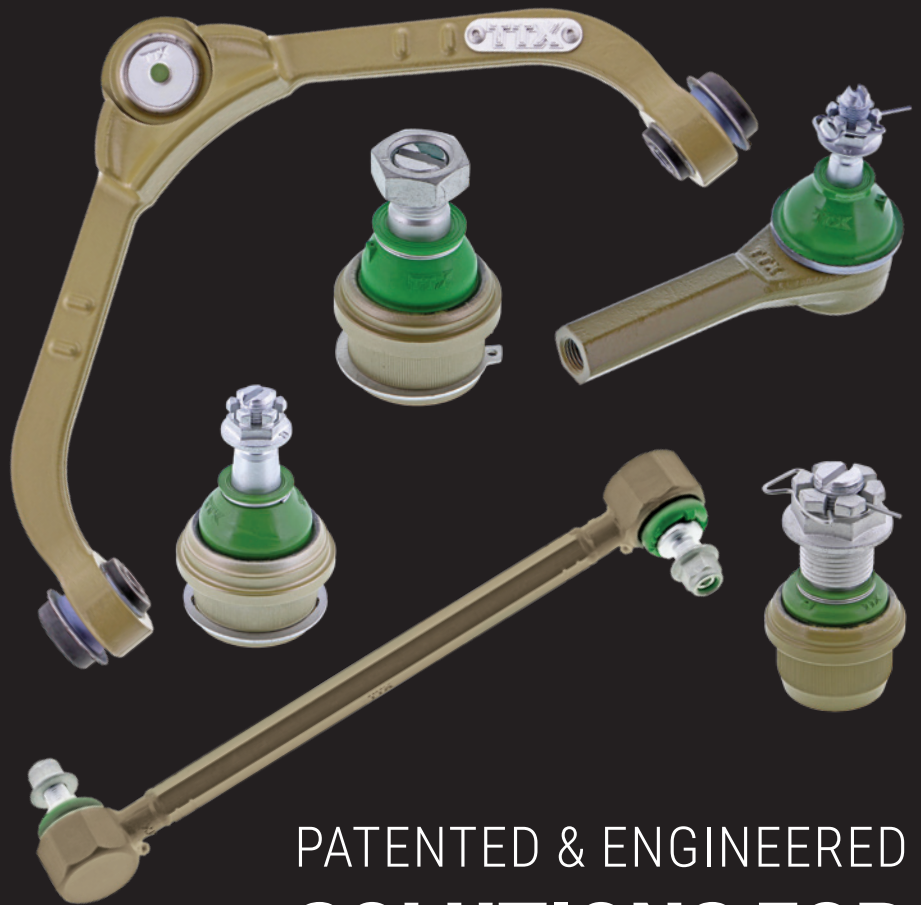


# TTX<sup>®</sup>



PATENTED & ENGINEERED  
**SOLUTIONS FOR**  
**2022-1972 JEEP VEHICLES**

**MEVO**TECH

# THE MEVOTECH TTX<sup>®</sup> ADVANTAGE

## Maximum Uptime

Ensure peak on-the-road uptime for both solid axle and IFS vehicles.

## Lower TCO

Drive down total cost of ownership with extended maintenance cycles and superior durability.

## Faster, Easier Installation

Reduce fitting time with LaborSaver<sup>™</sup> hardware and installation aids included in-box.

## Optimum Performance

Mevotech TTX parts feature application-specific upgrades, such as:

- ◆ Patented self-lubricating sintered greaseable bearings which excel under high heat and high loads to provide extended service life.
- ◆ Patented multi-lipped dust boots which guard against contaminants and road debris.
- ◆ Enhanced strength forgings and improved bushing designs to increase assembly strength and minimize undesired loading.

## BALL JOINTS



**TXMS25574 – Front Upper**  
2022-2020 Jeep Gladiator JT  
2022-2018 Jeep Wrangler JL/JLU



**TXK3134T – Front Upper**  
2018-1997  
Jeep Wrangler JK



**TXMS25561 – Front Upper**  
2021-2016  
Jeep Grand Cherokee



**TXMS25575 – Front Lower**  
2022-2020 Jeep Gladiator JT  
2022-2018 Jeep Wrangler JL/JLU



**TXK3185 – Front Lower**  
2018-1997 Jeep Wrangler JK



**TXMS25518 – Front Lower**  
2020-2011 Jeep Grand Cherokee

## CONTROL ARMS



**CTXMS251100/  
CTXMS251101 – Front L/R Upper**  
2015-2011 Jeep Grand Cherokee



**CTXMS251220/  
CTXMS251221 – Front L/R Lower**  
2021-2017 Jeep Compass (MP)  
2021-2015 Jeep Renegade

## STABILIZER LINKS



**TXMS258136 – Front**  
2021-2016 Jeep Grand Cherokee



**TXMS258152 – Front**  
2022-2020 Jeep Gladiator JT  
2022-2018 Jeep Wrangler JL/JLU

## TIE ROD ENDS



**TXMS25669 – Front Left Outer**  
2022-2020 Jeep Gladiator JT  
2022-2018 Jeep Wrangler JL/JLU



**TXMS25642/TXMS25643 – Front L/R Outer**  
2021-2017 Jeep Compass (MP)  
2021-2015 Jeep Renegade

## SINTERED GREASEABLE BEARINGS



**TTX**  
Sintered upper  
and lower bearings



**OE-STYLE**  
Plastic bearing

**Patented self-lubricating sintered greaseable bearings** (US Patent N° 9296271 & 10527089) provide extra endurance and durability to get more life out of parts, when compared to OE-style plastic bearings.

## ENHANCED BUSHINGS

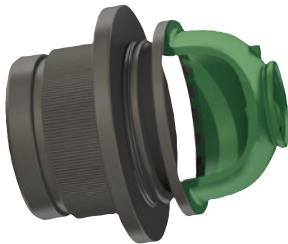


**TTX**

**OE-STYLE**

**TTX control arm bushings** use high-grade rubber and a solid construction which fills in voids to better withstand vibration without cracking or tearing. Knurling is added to the sleeve for added bite.

## HIGH STRENGTH LOCKING BOOT



Boot is mechanically locked to housing, keeping grease in and contaminants out.

**TTX patented** (US Patent N°9771971) **high strength multi-lip Locking Boot** is designed as a permanent and superior method of protection against contamination.

## ENGINEERED DESIGN



**TTX**



**OE-STYLE**

**TTX parts are engineered to last.** Application-specific material is added into critical areas on ball joints, control arms, stabilizer links and tie rod ends, which reduces flex and minimizes loading to prolong life.

## TTX PARTS ALSO FEATURE

- Advanced REPEL-TEK™ anti-corrosion protection
- Exclusive high-grade grease, pre-filled
- Easy-Snap™ cotter pin
- Integri-Boot™ technology

**LaborSaver®**

## EASY TO INSTALL

TTX parts are easy to install with hardware and install aids in-box, reducing total service time and cost.



Bootstaller™ makes fitting boots trouble-free where there is minimal space available



Coated Grade 12 and 12.9 installation hardware included



Installation Adapter allows for fast press-in of ball joint using standard tools

Installation Adaptor and Bootstaller™ included in-box where applicable



Choose TTX For coverage on these Jeep vehicles:

**CHEROKEE &  
GRAND  
CHEROKEE**  
(2021-1974)



SJ/XJ/  
KJ/KK/KL  
ZJ/WJ/  
WK/WK2

**GLADIATOR**  
(2022-2020)



JT

**WRANGLER**  
(2022-1986)



YJ/TJ/  
JK/JL/  
JLU

**COMMANDER**  
(2010-2006)



XK

**COMPASS**  
(2021-2006)



MK/MP

**WAGONEER  
& GRAND  
WAGONEER**  
(1993-1963)



SJ/XJ/  
ZJ

**PATRIOT**  
(2017-2007)



MK

**COMANCHE**  
(1992-1986)



MJ

**LIBERTY**  
(2012-2002)



KJ/KK

**CJ**  
(1988-1972)



5/6/7

**RENEGADE**  
(2021-2006)



BU

**J-SERIES**  
(1988-1974)



10/20

Visit [MEVOTECH.COM](http://MEVOTECH.COM) for more information and Jeep parts lookup!