



CMS251269/70 CONTROL ARM ENGINEERED SOLUTIONS



2019+ (5th Generation) RAM 1500



CMS251269



Hardware included
for complete install

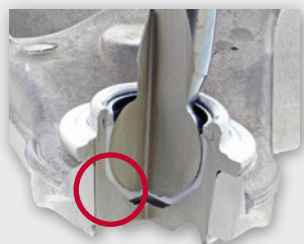
Mevotech CMS251269 and CMS251270 are the engineered solution for extended service life front lower control arms on the RAM 1500 5th Generation platform.

- Greaseable self-lubricating upper and lower sintered metal bearings improve and optimize performance under all service conditions.
- Improved bushing profile increases rigidity and reduces flex by removing voided areas.
- Superior part life and durability through innovative engineering.



- Mevotech front lower control arms CMS251269 and CMS251270 are the first available engineered solution for the 2019 and newer RAM 1500 (5th Gen) in the aftermarket.
- CMS251269/70 incorporate design enhancements which improve part service life and are a durable alternative to the OEM— especially for an application which is typically used as a working truck.
- LaborSaver™ additions in the box (such as included hardware) ensure a quick and complete install for the professional technician.

Typical Failure Mode

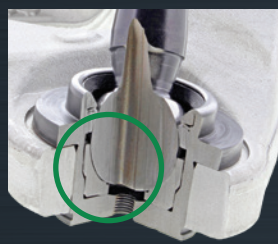


BALL JOINT
OEM ball joint uses sealed plastic bearing design.

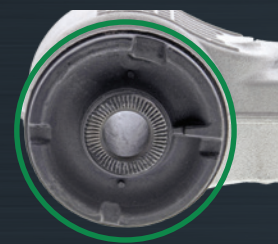


BUSHING
Both bushings incorporate voided areas. These voids present a potential for tearing and cracking.

Mevotech's Engineered Solution



ENHANCED BALL JOINT
Greaseable self-lubricating upper and lower sintered metal bearings are engineered to excel under high heat and high load conditions.



UPGRADED BUSHING
Voids are filled-in using resilient rubber material. Knurling is added to sleeve for additional assembly retention to frame.



ALSO AVAILABLE:

Engineered Front Upper Control Arms for 2019+ RAM 1500 (5th Gen) also available.

AVAILABLE NOW

Part Number	Position	Application
CMS251269	Front Left Lower	2021-2019 RAM 1500 (5 th Gen)
CMS251270	Front Right Lower	