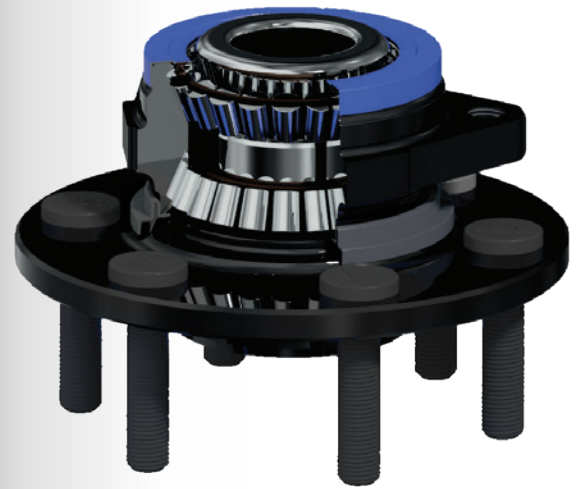


# TTX<sup>®</sup>

## HUB ASSEMBLIES ENGINEERED SOLUTIONS



TXF40306  
2016-2011 Ford  
F-250 SD & F-350 SD

**Mevotech's TTX hub assemblies** are the engineered wheel end solution for applications where maximum uptime and durable part operation are vital.

- Rolling elements and raceways are precision designed and matched for optimum performance under high-heat and high-loading conditions
- Advanced Quantum Sealing System provides a multi-tiered defence against contaminant intrusion
- Repel-TEK™ heavy-duty coating protects all surfaces and fastening hardware – keeping harmful road grime and corrosion away

TXF50302  
2019-2015 GM 1500  
Truck & SUV

TXF515102  
2018-2010 RAM  
4500/5500

Hardware included  
for a complete install

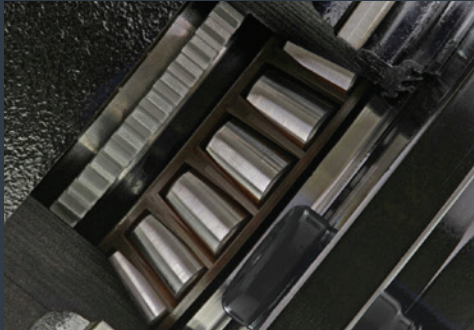
**MEVOTECH**

# ULTIMATE ENGINEERING

# HUB ASSEMBLIES

Mevotech's TTX hub assemblies have been engineered to redefine the standards of strength, endurance and performance at the wheel end.

Designed and tested for ultimate real-life durability, TTX hub assemblies are precision built inside and out for those applications where uptime is critical.



## ENGINEERED INTERNALS FOR FLAWLESS PERFORMANCE

Precision-engineered internals feature higher grade rolling elements and optimized geometry to minimize rolling resistance and maximize load distribution.

Components are matched together for exact mating fitment – meaning quiet performance and longer service life.

Casted tone ring is designed to match the original profile for seamless wheel speed signal output.



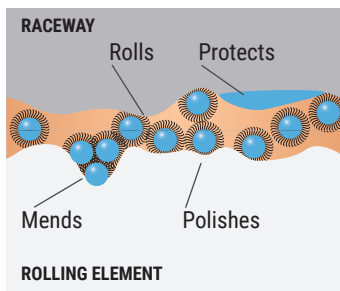
## ORBITAL ROLL FORMING

Roll forming locks internal components for a set preload right out of the box. No adjustment is required over service life. Increased assembly stiffness reduces potential vibration and improves part life.



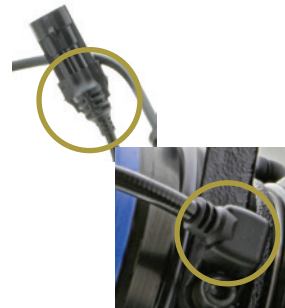
## ADVANCED SEALING

Quantum Sealing System keeps contaminants out and vital lubricating grease in. Multi-lip seals at inboard and outboard ends are designed using tough, low-friction material.



## NANOCERAMIC LUBRICATING TECHNOLOGY

NanoCeramic lubricant withstands extreme temperatures, resists corrosion and washout, and retains viscosity. Particles also act as microscopic bearings – reducing friction, filling and smoothing out raceways and rolling elements.



## ZERO-FAULT WHEEL SPEED SIGNAL

Abrasion resistant ABS cord protects against perforation and contaminant ingress at both hub and vehicle harness end. Sensor matches the original for type and output – meaning no interruption in ABS, TCS and other vehicle safety systems.



## REPEL-TEK™ ANTI-CORROSION COATING

Every surface is coated with heavy duty Repel-Tek™ coating. This prevents buildup and intrusion of contaminants, and reduces potential seizing of a wheel, CV shaft or brake rotor to the hub.



## EVERYTHING IN THE BOX FOR A COMPLETE REPAIR

Fastening hardware, fastening torque specifications and vehicle ABS signal type are included for a complete repair\*.

\*where applicable