

# TTX<sup>®</sup>

## TERRAIN TOUGH XTREME<sup>®</sup>



**PATENTED AND  
ENGINEERED SOLUTIONS**  
FOR LIGHT AND MEDIUM DUTY WORKING VEHICLES

**MEVOTEC**

# THE MEVOTECH ADVANTAGE

## Maximum Uptime

Ensure peak on-the-road uptime for both solid axle and IFS vehicles.

## Lower TCO

Drive down total cost of ownership with extended maintenance cycles and superior durability.

## Faster, Easier Installation

Reduce fitting time with LaborSaver™ hardware and installation aids included in-box.

## Optimum Performance

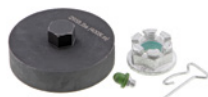
Mevotech TTX parts feature application-specific upgrades:

- ◆ Patented sintered metal-on-metal bearing designs accommodate increased loads and provide extended part service life.
- ◆ Patented boot construction guards against contaminants by sealing ingress points.
- ◆ Enhanced forgings and improved cross-sections and bushings minimize deformation and undesired loading.

## BALL JOINTS



**TXMS25519 – Front Upper**  
2008-2018 RAM 4500 & 5500



**TXMS40506 – Front Upper**  
2005-2019 Ford F-450 SD & F-550 SD



**TXMS25520 – Front Lower**  
2008-2018 RAM 4500 & 5500



**TXMS40505 – Front Lower**  
2005-2019 Ford F-450 SD & F-550 SD



## CONTROL ARMS



**CTXMS501195 – Front Upper**  
2011-2019 Chevrolet Silverado & GMC Sierra 2500 HD / 3500 HD



**CTXMS501179/80 – Front Lower**  
2011-2019 Chevrolet Silverado & GMC Sierra 2500 HD / 3500 HD



## STABILIZER LINKS



**TXK8848- Front**  
2009-2018 – Chevrolet Express & GMC Savana 4500



**TXMS40884 – Front**  
2015-2019 Ford Transit 150/250/350/350 HD



## TIE ROD ASSEMBLY



**TXMS30728 – Front**  
2012-2019 Nissan NV1500/2500/3500



## SINTERED METAL GREASEABLE BEARINGS



**TTX patented** (US Patent # 9296271 & 10527089) **sintered metal greaseable bearings** provide extra endurance and durability to get more life out of parts, when compared to OE-style plastic bearings.



**TTX**

Sintered metal upper and lower bearings



**OE-STYLE**

Plastic bearing

## ENHANCED BUSHINGS



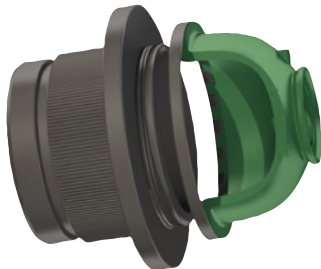
**TTX**

**OE-STYLE**

**TTX control arm bushings** use high-grade rubber and a solid construction which fills in voids to better withstand vibration without cracking or tearing.

Knurling is added to the sleeve for added bite.

## HIGH STRENGTH LOCKING BOOT



Boot is mechanically locked to housing, keeping grease in and contaminants out.

**TTX patented** (US Patent # 9771971) **high strength multi-lip locking boot** is designed as a permanent and superior method of protection against contamination.

## MORE MATERIAL



**TTX**

**OE-STYLE**



**TTX parts are engineered to last.** Application-specific material is added into critical areas on ball joints, control arms, stabilizer links and tie rods, which reduces flex and minimizes loading to prolong life.

### TTX PARTS ALSO FEATURE

- Advanced REPEL-TEK™ anti-corrosion protection
- Easy-Snap™ cotter pin
- Exclusive high-grade grease, pre-filled
- Integri-Boot™ technology

**LaborSaver**

## EASY TO INSTALL

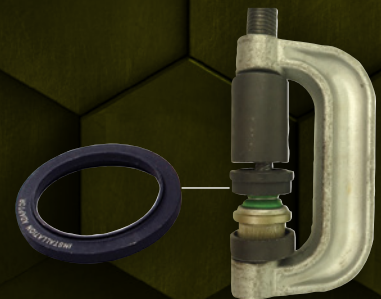
TTX parts are easy to install with hardware and install aids in-box, reducing total service time and cost.



Bootstaller™ makes fitting boots trouble-free where there is minimal space available



Coated Grade 12 and 12.9 installation hardware included



Installation Adapter allows for fast press-in of ball joint using standard tools

Installation Adaptor and Bootstaller™ included in-box where applicable

# LIGHT AND MEDIUM DUTY APPLICATIONS

## CHEVROLET/ GMC



CITY EXPRESS  
EXPRESS/SAVANA VANS  
SILVERADO/SIERRA 1500  
SILVERADO 1500  
SILVERADO 2500HD  
SILVERADO 3500 HD  
SUBURBAN/YUKON/TAHOE  
TOPKICK/KODIAK C4500/5500

## DODGE



RAM 1500/2500/3500/4500/5500  
C/V  
PROMASTER 1500/2500/3500

## FORD



E-SERIES  
F-SERIES  
TRANSIT SERIES  
EXPLORER  
EXPEDITION

## FREIGHTLINER/ MERCEDES-BENZ



SPRINTER

## NISSAN



NV200  
NV1500  
NV2500  
NV3500  
TITAN XDS

## STERLING TRUCK



BULLET 45/55