



## Land Rover Rear Knuckle Upper and Lower Bushings

<b>Brand</b>	Supreme	<b>Product</b>	Bushings	<b>Date</b>	August 2021
<b>Part Number(s)</b>	Various				

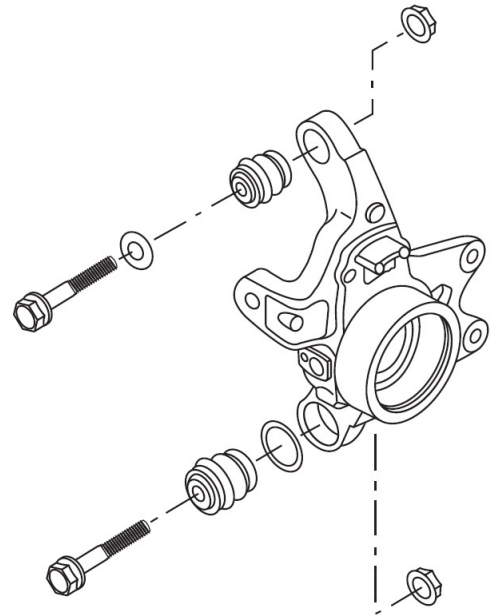
Many Land Rover applications use an upper and lower bushing mounted on the inside of a bore located at the top and/or bottom of the rear knuckle or wheel carrier. This bushing allows the suspension to deviate during travel to keep the wheel in the correct position. **See Figure 1.**

Typically, once these bushings are past their service life, the Professional Technician will notice the following:

- Rear tire inner tread wear and/or cupping.
- Poor handling, including rear wandering or traveling during turns.
- Vibration from the rear as the vehicle is in motion.
- Squeaks in the rear when driving over road imperfections (potholes, bumps).

**To successfully install these bushings and ensure maximum part life, it is important to adhere to the following:**

- Use the factory tool for removal and installation. Aftermarket tools may not have the correctly sized adaptors and/or cups and may warp or damage the knuckle or knuckle bore.
- Correct seating and alignment are critical to part longevity. The factory tool will help ensure the ball joint is even and square on the proper install axis. It may require more than one reset of the tool position during install.
- Do not use a heat source, a hammer or any blunt force to aid in removal or installation. This can distort or damage the knuckle and or knuckle bore, especially if aluminum.
- Some Land Rover applications use an eccentric bolt in the upper position. Place a witness mark over the bolt and knuckle before removal, to aid reinstall.



**Figure 1.** Typical Land Rover rear knuckle with upper and lower bushings



- After removing the worn bushing, remove all rust, burrs and other contaminants from the bore. Inspect the bore for abnormal wear, enlargement, “out of roundness” and/or other damage before installation. Replace knuckle if any of these conditions are found.
- Ensure correct orientation of replacement bushing during install. Generally, this will mean the mounting lip will face the front of the vehicle. **See Figure 2.**
- Renew hardware, such as snap rings and self-locking nuts.
- Ensure all components are torqued to the correct values. For most suspension repairs, Land Rover requires the vehicle to be in a particular service mode when performing the final torque sequence. Follow the correct torque procedure for the vehicle being repaired.
- After repair, perform a 4-wheel alignment.

Always reference the original factory service manual for proper diagnostic, removal and replacement procedures, as well as for all related specifications and values. Use only a calibrated torque wrench for final fastening.



**Figure 2.** Ensure lip (circled) is correctly orientated during press-in

