



Steering Rack Identification: Volvo 700 & 900 Series

Brand	Original Grade/Supreme	Product	Tie Rod Ends	Date	September 2021
Part Number(s)	GEV292/GEV332/MEV292/MEV332				

Due to production variances at factory level, specifically multiple component suppliers, the applications below may be equipped with one of two different steering rack types.

Application(s)

- 1992-1985 Volvo 700 Series
- 1997-1991 Volvo 900 Series

When ordering replacement front inner tie rod ends, it is recommended that the Professional Technician verify the vehicle's steering rack type. This will help to ensure a frustration-free repair outcome.

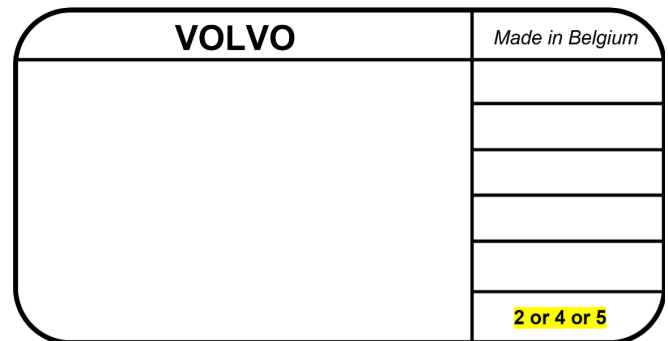
To determine the steering rack type, follow the inspection procedures below. This procedure presumes the vehicle is still equipped with the original factory-installed rack and has not been swapped for an alternate.

- Locate Product ID Plate (also known as Service ID Plate)
- On most models, the plate can be found mounted on the right (passenger's) side of the engine compartment near the radiator support
- On plate, read the last line, bottom right for "Steering Gear" and verify the single digit

TRW/CAM Steering Rack

If the single digit is 2 or 4 or 5, this is considered a TRW/CAM style rack.
See **Figure 1** for digit location on plate.

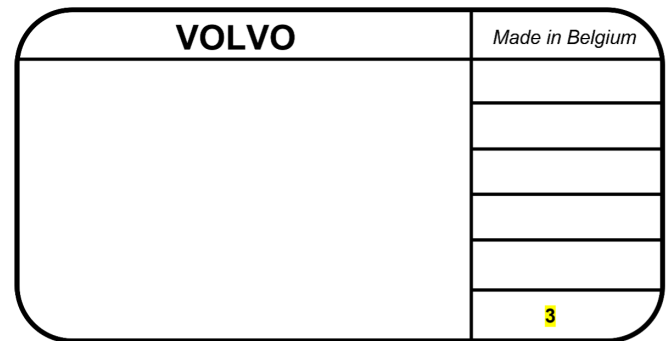
Figure 1.



ZF Steering Rack

If the single digit is 3, this is considered a ZF style rack.
See **Figure 2** for digit location on plate.

Figure 2.



Alternatively, if the original tie rod end has been removed from the steering rack, check for a rubber grommet. Only ZF compatible inner tie rod ends use this rubber grommet. **See Figure 3**

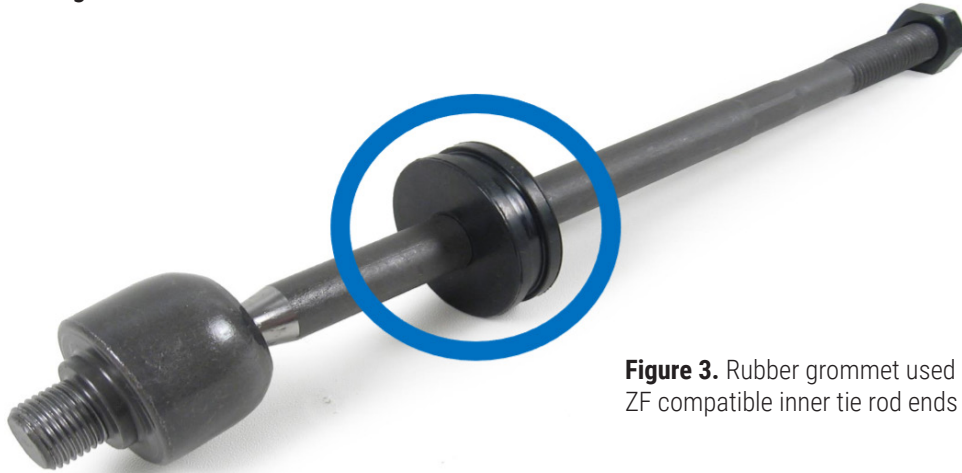


Figure 3. Rubber grommet used exclusively on ZF compatible inner tie rod ends

Koyo Steering Rack

If the single digit on the bottom line is 1, this is considered a Koyo style rack. **See Figure 4** for digit location on plate.

VOLVO	<i>Made in Belgium</i>
	1

Figure 4.

