



Steering Rack Identification: Volvo C70/V70/S70 (P80 1st Gen)

Brand	Original Grade/Supreme	Product	Tie Rod Ends	Date
				September 2021
Part Number(s)	GEV330/MEV330			

Due to production variances at factory level, specifically multiple component suppliers, the applications below may be equipped with one of two different steering rack types.

Application(s)

- 2004-1998 Volvo C70
- 2000-1998 Volvo S70
- 2000-1998 Volvo V70

When ordering replacement front inner tie rod ends it is recommended that the Professional Technician verify the vehicle's steering rack type. This will help to ensure a frustration-free repair outcome.

To determine the steering rack type, follow inspection procedures below. This procedure presumes the vehicle is still equipped with the original factory-installed rack and has not been swapped for an alternate.

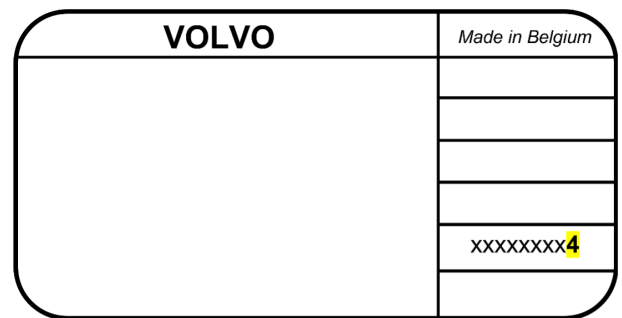
- Locate Product ID Plate (also known as Service ID Plate)
- On early production models, the plate can be found mounted on the left (driver's) side of the engine compartment
- On later production models, the plate can be found mounted onto the B pillar of the right (passenger's) rear door
- On plate, read the fifth line toward bottom right and verify the last digit

TRW/CAM Steering Rack

If last digit on the fifth line is 4, this is considered a TRW/CAM style rack.

See **Figure 1** for digit location on plate.

Figure 1.

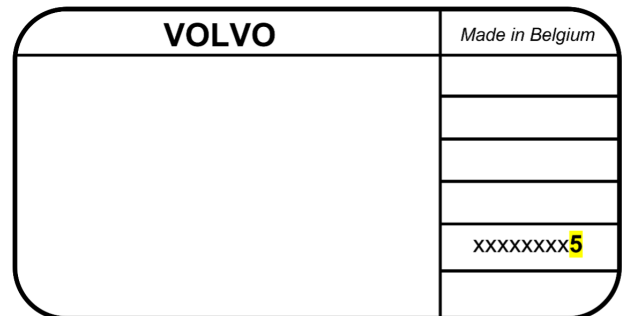


SMI Steering Rack

If last digit on the fifth line is 5, this is considered a SMI style rack.

Alternatively, a SMI logo may be stamped onto the rack and viewed from underneath. See **Figure 2** for digit location on plate.

Figure 2.



Always refer to the factory service manual for correct diagnostic procedures, component removal and installation methods, as well as fastening torque values and procedures where applicable. Only use a calibrated torque wrench for final fastening.

