



Design Improvement: 2020-2007 Mitsubishi Sedan, CUV & SUV Front Lower Control Arms

Brand	Supreme	Product	Control Arm	Date	October 2022
Part Number(s)	CMS80170/CMS80171				

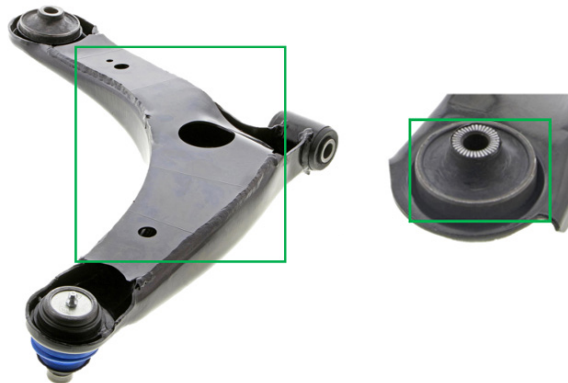
The OEM (PN: 4013A009/4013A010 and various other OE-style) front lower control arms for the below listed application(s) utilize a standard stamped steel profile.

Application(s)

- 2020-2018 Mitsubishi Eclipse Cross
- 2017-2009 Mitsubishi Lancer
- 2020-2007 Mitsubishi Outlander
- 2022-2015 Mitsubishi Outlander Sport

Mevotech Supreme front lower control arms CMS80170 and CMS80171 are engineered with an improved stamping profile, with an additional welded reinforcement plate. This adds rigidity and strength to the assembly as the vehicle is motion, reducing stress on the component. Additionally, the ball joint utilizes greaseable self-lubricating sintered bearings and bushing voids are filled-in to enhance durability. **See Figure 1.**

CMS80170



OE-STYLE



Figure 1. Mevotech Supreme front lower control arm CMS80170 featuring improved stamping profile with reinforcement plate and filled-in bushing voids (top) vs OE-style (bottom)

