



Major Design Improvement: 2013-2018 Nissan Altima and 2016-2019 Nissan Maxima Front Lower Control Arms

Brand	Supreme	Product	Control Arms	Date	December 2020
Part Number(s)	CMS31170/CMS301171				

The OEM front lower control arms for 2013-2018 Nissan Altima and 2016-2019 Nissan Maxima are characterized by a non-greaseable plastic bearing and control arm body void.

Mevotech Supreme replacement front lower control arms replace the void on the OEM design with a solid reinforced design. This enhances stiffness and strength of the control arm assembly. Additionally, this reduces load on key control arm components and assists in preventing twisting and other changes in suspension geometry as the vehicle travels. See Figure 1.

Mevotech Supreme front lower control arms also feature sintered metal bearings which are greaseable for increased service life. This is made possible using patented Bi-Metallic Technology which allows a sintered metal ball joint in an unitized aluminum control arm. See Figure 2. New hardware is provided for a complete install.

It is important to note that when ordering replacement arms, Mevotech Supreme front lower control arms may appear thicker and heavier but are direct fit replacements.

Figure 1 : Mevotech solid reinforced design (left) vs OE voided design (right)

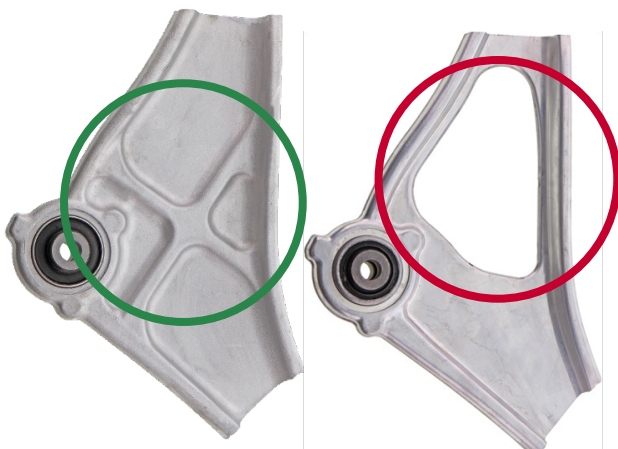


Figure 2 : Mevotech Bi-Metallic Technology sintered metal bearing (left) vs OE plastic bearing (right)

